

Shuttle valve type WV and WVC

Shuttle valves are a type of check valve. They have two inlets and one outlet. As soon as a pressure signal is present on at least one of the two inlets, an outlet signal is generated. The inlet with the higher pressure is automatically connected to the outlet. The other inlet with lower pressure is blocked by a ball (OR operator).

The shuttle valve type WV is integrated in a T-fitting for pipe connection. The type WVC is a screw-in valve. The shuttle valves can withstand pressures up to 700 bar and have low flow resistances.

They can be used for transmitting control pressures or control and operating volumetric flows.

Features and benefits:

- Pressures up to 700 bar
- Insert and housing versions

Intended applications:

- In load-sensing systems
- Construction and construction materials machinery
- Cranes and lifting equipment
- Road vehicle
- General mobile hydraulics



Nomenclature:	Shuttle valve
Design:	Individual valve for pipe mounting Valve insert Screw-in valve
p_{max}:	700 bar
Q_{max}:	160 l/min

Design and order coding example

WV 10 - S

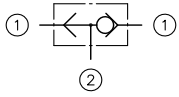
Design

- High pressure version (S)
- Low pressure version (L)

Basic type, size

Type WV for pipe connection, size 6 to 18
Type WVC and WVH as screw-in valve, size 1
Type WVE as screw-in valve, size 11

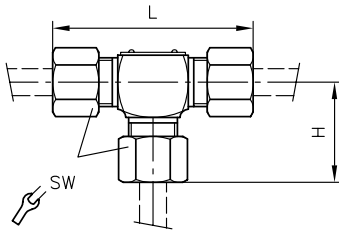
Function



- 1 Inlet
- 2 Outlet

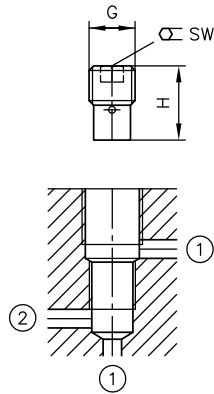
General parameters and dimensions

WV

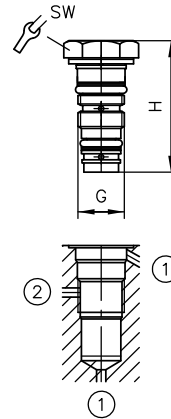


- 1 Inlet
- 2 Outlet

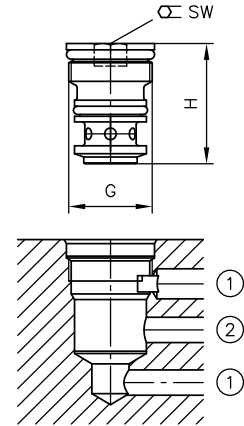
WVC



WVH



WVE



	Q_{max} [lpm]	p_{max} [bar]	External pipe \varnothing [mm]	Mounting thread	Dimensions [mm]			m [g]	
					L	H	SW = a/f		
WV 6 - S	6	700	6	G	62	31	17	120	
WV 8 - S	15		8		64	32	19	170	
WV 10 - S	25	500	10		--	68	34	22	225
WV 12 - S	40		12			76	38	24	290
WV 14 - S	60		14			80	40	27	320
WV 16 - S	100		16			86	43	30	390
WV 18 - L	150	315	18			80	40	32	340
WVC 1	6		--		M 10 x 1	--	16	5	7
WVH 1	3	700	--	M 10 x 1	--	28.5	14	10	
WVE 11	25	500	--	M 18 x 1	--	26	10	20	

Associated technical data sheets:

- [Shuttle valve type WV and WVC: D 7016](#)

Similar products:

- Shuttle valves type WVH: **Sk 7962**
- Shuttle valves type WVE: **Sk 7088 050**